

## **CHB Arts**

6, la haute borde

41150 Rilly-sur-Loire

[residences@c-h-b.fr](mailto:residences@c-h-b.fr)

# **OPEN CALL**

## **CHB Residency Program**

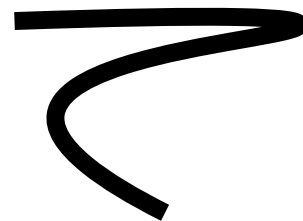
CHB has been dedicated to hosting and fostering the creativity of artists from all backgrounds and disciplines since 2020. As a women-led community, we prioritize supporting women, trans and non-binary artists, and, in an intersectional approach, we are open to considering all projects aimed at combating discrimination in general.

CHB is a place for community living and positive interaction with nature and each other.

The program is open to both accomplished practitioners and up-and-coming candidates with a high potential for artistic growth. Applicants are evaluated on their practice as well as on the quality and pertinence of a residency project in CHB.

We welcome artists, writers, architects, designers, filmmakers, musicians, and researchers, among many other disciplines, to develop, alone or with collaborators, their own large or small scale projects. Residents may take advantage from all the facilities for work and accommodation, from its 10 hectares of land, pasture, a pond, and an unpolluted fauna and flora.

Priority is given to projects that would particularly benefit from a working time on the field.

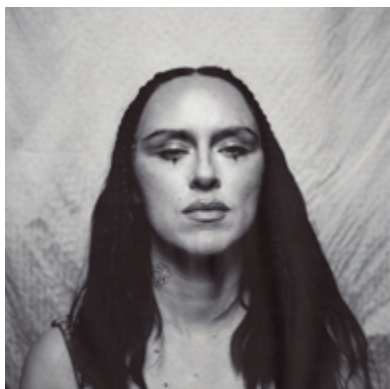


## **CHB Arts 2025 jury**

For the first time this year, the selection of applications will be collegial. CHB Arts is honored to be joined in this mission by professionals recognized in their practice and in line with its values.

Many Thanks to the members of the 2025 jury.

- \* **BONNIE BANANE**, singer, songwriter and author
- \* **INÈS DI FOLCO JEMNI**, painter
- \* **MAYA COLINE**, cultural Project Manager
- \* **SARRA RYMA**, film maker and activist
- \* **CHB ARTS FOUNDERS AND MANAGERS** : Céline Barrère, Cécile Simon, Violette Platteau & Romane Constant.



**BONNIE BANANE, singer, songwriter and author**

From her first single “Muscles” in 2012, to her second album Nini, released in 2024, via numerous collaborations (Sabrina Bellaouel, Chassol, Varnish La Piscine, Hubert Lenoir, etc.), Bonnie Banane traverses the French musical landscape with a pace that’s uniquely her own.

She strives to reconcile the most opposing realities: cold death, burning passion, and all those timid in-betweens to whom few songs are dedicated. Inspired by what surrounds her, her own story and those of others, between the surreal poetry of Brigitte Fontaine and the gospel of D’Angelo, she cultivates the art of being enigmatic, sexy and eccentric. Nourished by life, her music returns to it: on stage, it’s between the exuberance of the clown and the dignity of the mourners that she teaches us to dance with doubt, laugh with gloom, forming the unexpected soundtrack of our lives.

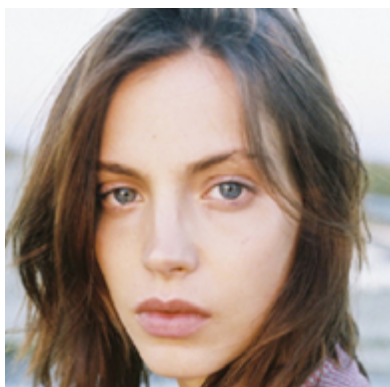


**INÈS DI FOLCO JEMNI, painter**

Inès di Folco Jemni is a painter who deals with themes of exile and motherhood through her works, which evoke past lives and ancestors.

Her creations offer personal and historical narratives outside the Western perspective.

Born in Paris in 1993, Inès is a Franco-Tunisian artist who graduated from the Beaux-Arts de Paris in 2018.



**MAYA COLINE, cultural project manager**

Maya Coline is an independent producer of cultural events, holding a DNSEP from the Paris-Cergy National Graduate School of Art and a master's degree in curatorial practices from the Institut d'Études Supérieures des Arts in Paris. She was part of the Fitzpatrick Gallery team (2021-2024), overseeing the production of site-specific and international exhibitions, during which she collaborated with numerous artists and curators. She was involved in the significant contemporary art events Basel Social Club (2022, 2023) and Salon d'Été (2023), tackling traditional art fairs by emphasizing the mutualization of resources over competition. Interested in unique practices and counterculture, she is committed to conceiving and supporting artistic projects that provide alternatives to oppressive systems. Encouraging openness and a dynamic of sharing, she regularly invests her efforts in curatorial projects and artistic initiatives, such as the residency at Château de la Haute Borde.



**SARRA RYMA, filmmaker & activist**

Sarra Ryma is a queer Algerian filmmaker and activist based in Paris. Their work is dedicated to making visible what we can't see and questioning what we do see.

Passionate about the themes of intersectionality, migration, love, vulnerability, solitude, restlessness of youth, and Arab melancholy, their visual landscapes are colorful, raw, tender and subversive

Sarra is drawn to the dichotomy between the private and the public body, particularly the representation of marginalized or invisible bodies, in both film and the queer community. In 2020 they co-founded Etats de Corps, a space for reflection and curation around corporality, a mobile territory where we can seek out, play, transmit, and transcend the limitations and inhibitions creating violence and shame around our physical presence. A place for deconstruction and healing. A representative subjectivity of a body in the making, an expression of the love we give to ourselves, the Other, and others.



## **CHB ARTS - Céline Barrère, Cécile Simon, Violette Platteau & Romane Constant**

Château de la Haute Borde (CHB Arts) association is committed to gender equality and fighting all forms of social, economic, racial and religious discrimination. Our values are sisterhood, kindness, collective experiences and intersectional thinking. We believe in the strength of the collective and the development of a solid support network in a still too discriminating environment.

Since 2020, CHB Arts has been committed to changing the context of cultural creation. More than just a place for residents to create, it becomes the source of artists' creations and the impetus for new encounters through the plurality of artistic forms and the intangible diversity of readings.

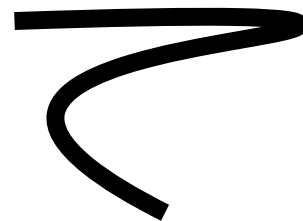
Cécile Simon and Céline Barrère are founders and managers at CHB, they worked together for 10 years as creatives with their studio Barrère&Simon in Paris.

Cécile Simon is a director focusing on feminism and social sciences with an intimate approach. She has a strong sense of community and uses it to ensure equality and respect within the collective.

Céline Barrère is a photographer and Art Director, she now dedicates her skills to both CHB Arts and Château de la Haute Borde. Art enthusiast and collector she works at CHB for the recognition and valorization of artistic creation.

Violette Platteau is the third manager at CHB. With a strong cultural background, she is in charge of event programming and production at CHB Arts. Passionate about nature, she developed a strong bond with the area and reinforces the outreach of CHB locally.

Romane Constant lives and works in Paris. Alongside her work as a freelance writer and curator, she is involved in the development of several associations and artistic residencies. In her work, she questions the decentralization of cultural resources and infrastructures in France, accessibility to these infrastructures, and the relationship between volunteers and governing bodies in the associative system.



Our call for applications for 2025 residency program opens on  
**October 6, 2024.**

Application deadline is  
**November 15th, 2024.**

Applicants can apply for  
**3 week to 1 month residencies**

within this period:

**April to June 2025**

**September to November 2025**

**Fee : 20€ / Day**

CHB is self funded, we receive occasional subsidies that are still insufficient to make the residence free or remunerated which is why we ask residents to contribute 20€ per day.

This fee covers accommodation in a private bedroom with ensuite or shared bathroom, meals, and access to all our facilities.

Depending on the needs outlined by their residency project, residents will be granted exclusive or shared use of additional studio space.

Artists will be asked to showcase their work at the end of the residency.

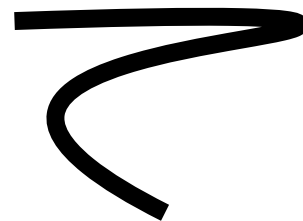
Travel costs are covered up to 100€ per application.

CHB will provide assistance when and where possible, but Residents are responsible for obtaining their own visas or other necessary travel and residency documents.

Residents must also make sure they have valid insurance to cover medical assistance and accidents during their stay in France.

Once on site, residents will receive support from our team for their production needs, to the extent of CHB Art's human and material resources.

In the event of a residency grant, the artist's remuneration will be defined in a contract between CHB and the artist prior to arrival.



Please send us a PDF file  
with the following infos to this adress

**residences@c-h-b.fr**

0. Name, Age, Adress, Email, Phone number

1. Pitch of your project proposal (max. 700 characters)

2. Short biography including a brief description of the applicant's practice (max 1000 characters)

Introduce yourself briefly, describe your background and artistic practice, focusing on your main influences and the evolution of your work.

Project proposal (max. 2 pages):

- Detail the specific work you intend to accomplish during the residency at CHB.
- Explain why CHB is the ideal place for the development of your project.
- Mention the networks and environments you plan to leverage your project.
- How this project fits within your broader artistic practice.

4. Portfolio

---

**thank you**